

## DATA LINK PROCESSOR (Link 16)

The Aerosystems DLP (Link 16) is a cost effective ¼ ATR Short LRU based on a commercially available processor system. The DLP interfaces to either a Class II or LVT providing Situational Awareness via the Aerosystems



Bespoke JSAF software.

*The DLP(Link 16) utilises the AGPU-1 from the AeI General Processing Unit range*

### General Equipment Specification

Shock	DEF STAN 00-35 (10g, 11mS, 18 impacts of 3 shocks 3 axes)	Humidity	95% Non Condensing
Vibration	BS 3G 100, 0.005g <sup>2</sup> , 10 to 1000Hz for 50Hrs	Weight	Approx. 3Kg
Temp	Operating -20 +50°C Storage -40 +70°C	EMC	DEF STAN 59-41, DCS01,02,04,08,09,10 DCE01, DRE01, 02 DRS01, 02
Altitude	30,000ft (40,000 Non Operating)	Power	28V DC (115V 400 Hz Optional)

**AEROSYSTEMS INTERNATIONAL**  
Alvington, Yeovil, Somerset BA22 8UZ  
Tel: +44 (0) 1935 443000  
Fax: +44 (0) 1935 443111  
[www.tadil.net](http://www.tadil.net), [sales@aeroint.com](mailto:sales@aeroint.com)

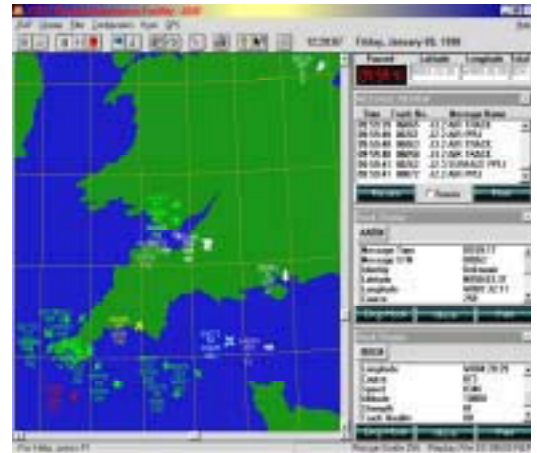
Suite 204.  
1 Resource Square  
Central Florida Research Park  
13501 Ingenuity Drive  
Orlando, Florida, 32826  
Tel: 407 381 0329

# DATA LINK PROCESSOR

The DLP'S JSAF software is a cost effective, operational system developed by Aerosystems and in use by the UK Ministry of Defence (MoD). The JSAF is used to passively monitor, and show to the operator on a graphical interface, the information exchanged between a JTIDS terminal and a host system.

Features include:

- Recognised Situational Awareness Picture:  
Air, Surface, Subsurface, EW information Worldwide mapping.
- Use of coloured symbols to differentiate the object types and hostility.
- Complete Link 16 message catalogue.
- Map manipulation functions (zoom, change centre, display map/outlined map, etc).
- Message display: all messages received from the terminal/host are listed in a separate window. By clicking on one or many of the messages the operator can access the detail of the message(s) in a separate window.
- Track hook: by specifying the TN or by picking an object on the graphical display.
- Presentation of track relevant (TN, IFF/SIFF, altitude, etc) information in a configurable track tote on the graphical display.
- Track history.
- Extensive filtering capabilities (by object categories, message type, map data, etc).
- Recording of all messages received from the interface.
- Extensive analysis tools including :
  - replay at variable speed,
  - replay control (start, stop, pause, rewind, forward, change speed, etc),
  - replay filters (by category, identity, message type or combination of these),
  - GPS interface (optional): provides accurate information regarding current time and position.



*JSAF Situational Awareness Display*