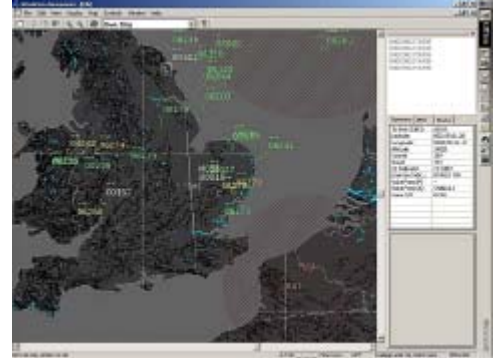


ATLAS features:

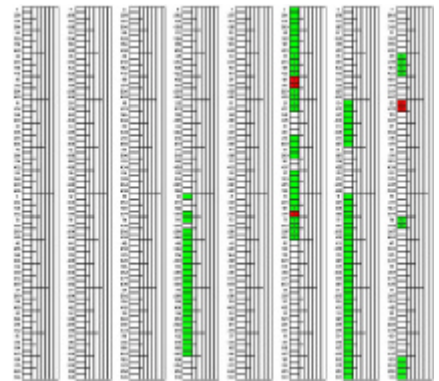
Real-time Situation Awareness Display of air, surface, subsurface and ground picture with:

- Complete world map
- Topographical data
- TACAN/DME points
- JU and surveillance picture
- Track Label/Tote information summary



Network Connectivity Monitoring with:

- Actual Connectivity Display
- Theoretical Connectivity Display
- Pseudo Connectivity Display allowing "what if" changes to be made
- Automated generation of J-Series messages to change connectivity



Timeslot Management with:

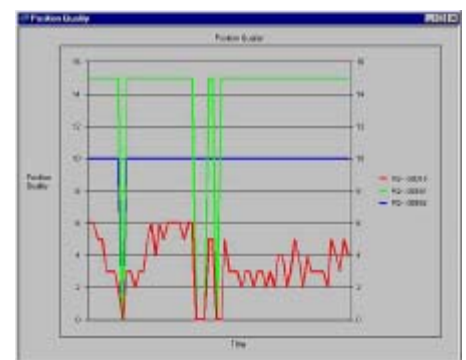
- Graphical manipulation of network timeslot structure
- Graphical display of timeslot allocations
- Complete network violation checks for created timeslots

Network Monitoring including real-time monitoring of:

- Network performance/usage
- Timeslot utilisation
- Network/CAA/FAA violations (e.g. detection of illegal transmissions/TSDFs)
- Man-readable datalink message display

Post operation analysis including:

- Complete record and replay capability
- Network performance summary
- Violation summary
- Network summary data provided as Microsoft Excel



AEROSYSTEMS INTERNATIONAL, Alvington, Yeovil, Somerset, BA22 8UZ, United Kingdom
 Telephone: +44 (0) 1935 443000, Facsimile: +44 (0) 1935 443111

AEROSYSTEMS INTERNATIONAL Inc. Suite 204, 1 Resource Square,
 Central Florida Research Park, 13501 Ingenuity Drive, Orlando, Florida, 23826
 Telephone: 407 381 0329, Facsimile: 407 381 7813

www.aeroint.com, www.tadil.net, www.terrington.com, enquiries@aeroint.com